








Shalersville Township

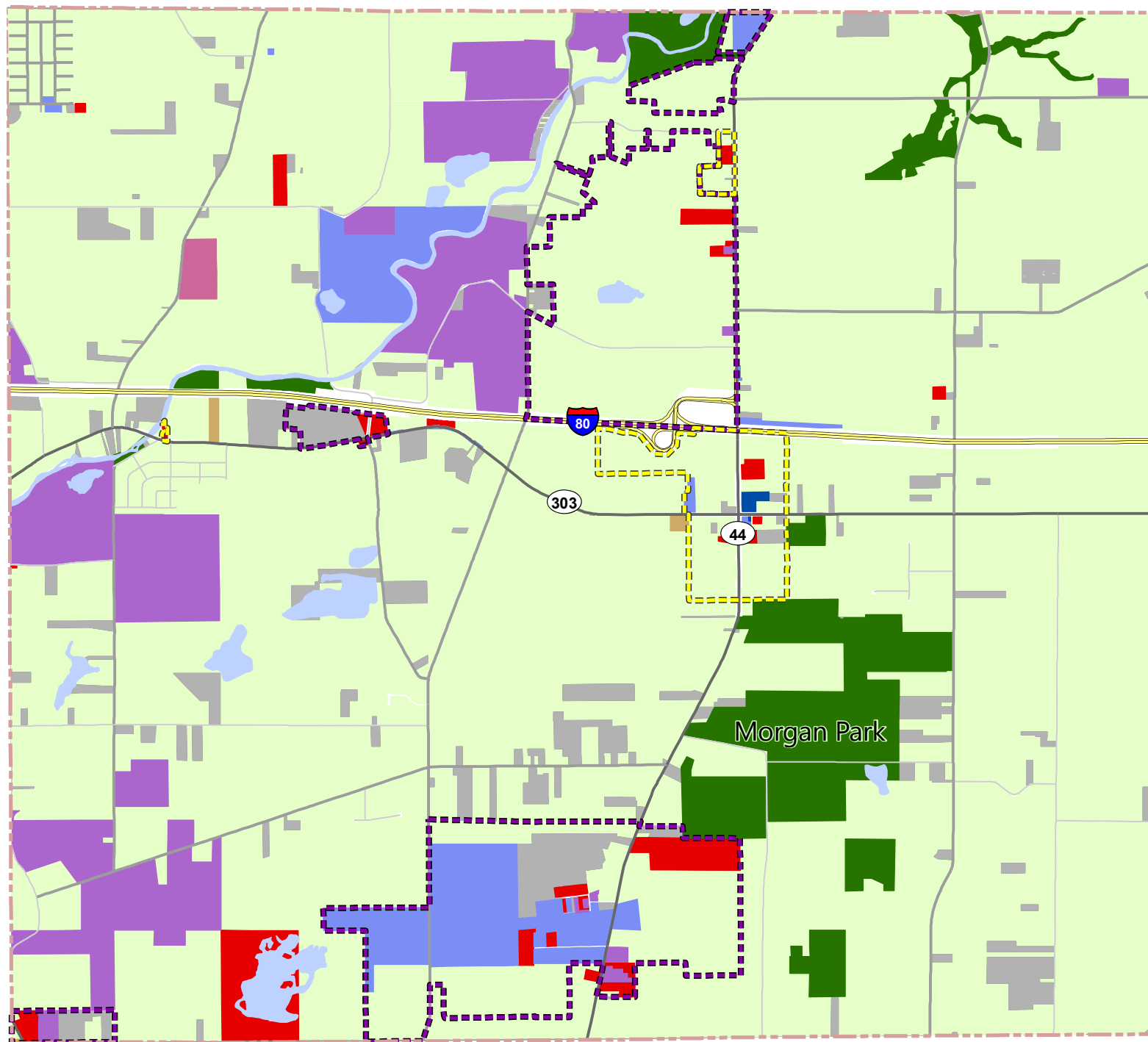


Land Use 2019

-  Cemeteries
-  Commercial
-  Education
-  Government
-  Hospitals & Charities
-  Industrial
-  Parks & Preserves
-  Vacant (non-residential)
-  Agriculture & Residential

Commercial & Industrial Zoning

-  Industrial
-  Residential/Commercial



Source: Roads, Jurisdictional Boundaries, Portage County GIS, 2019; Land Use, Portage County Auditor's parcel data, August 2019; Zoning, PCRPC and community zoning resolutions, 2019 (SUBJECT TO CHANGE)

Created by PCRPC
September 2019

