

# Sunoco Pipeline LP Portage County Commissioners Meeting: January 16<sup>th</sup> 2014

---



**Sunoco Logistics**



Sunoco Pipeline L.P.

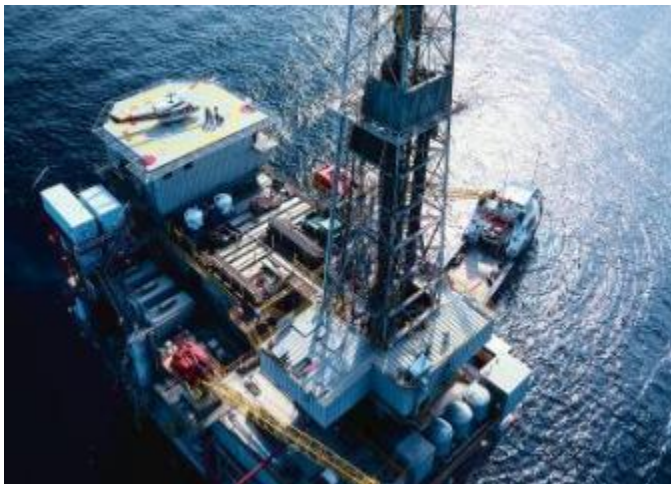
# Overview



- Headquartered in Philadelphia, PA.
- Core Values: Safety, Security and Environmental Stewardship.
- 75 years of Experience Operating pipeline systems safely across the nation.
- Employ the most advanced methods of leak detection, integrity management, and damage prevention to minimize risk of release.
- Systems monitored 24/7 via our control centers.

# Why Pipelines?

---



# Pipeline Safety Record



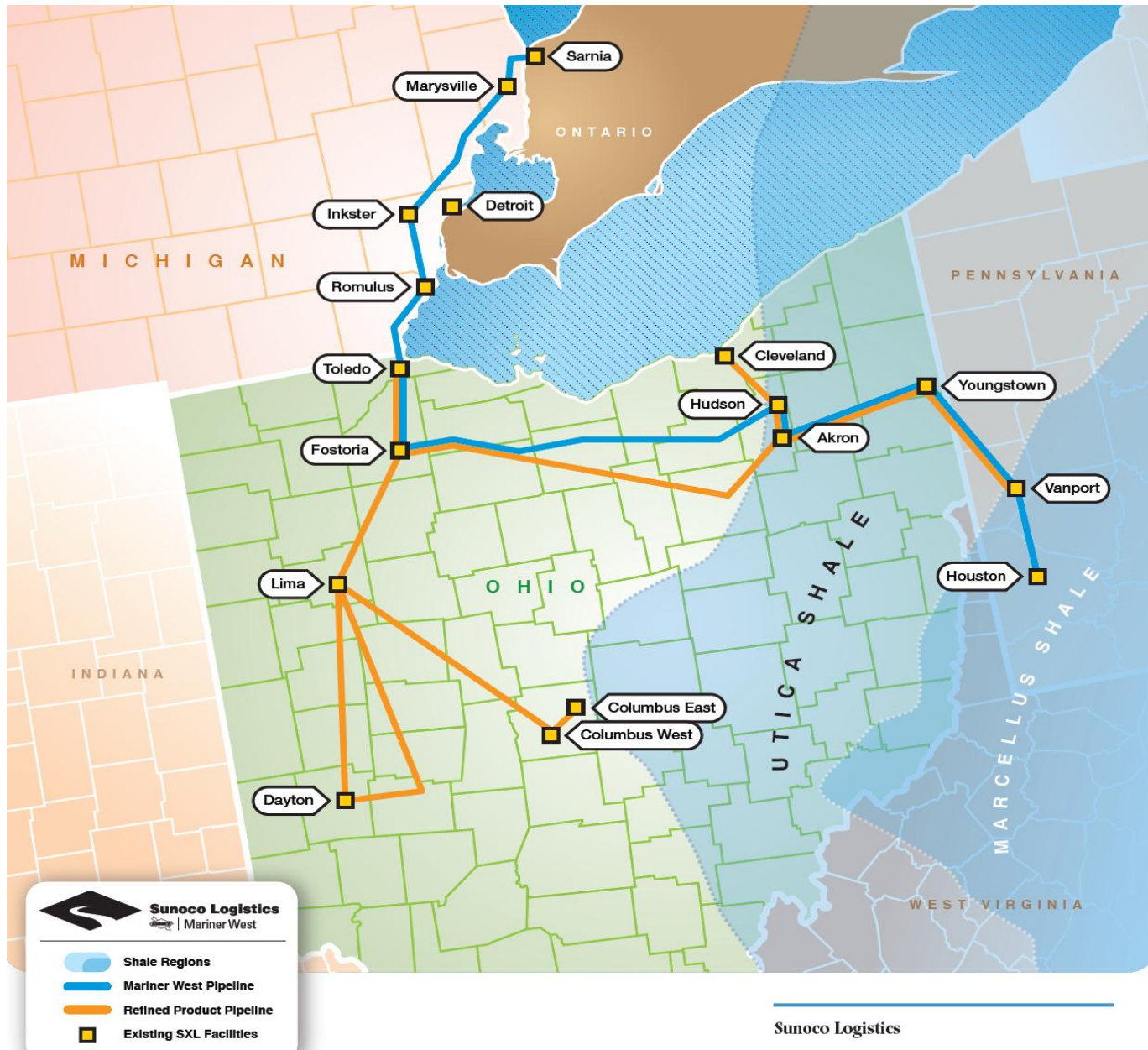
MANHATTAN INSTITUTE FOR POLICY RESEARCH

**A review of safety and accident statistics provided by the U.S. Department of Transportation for the extensive network of existing U.S. pipelines—including many linked to Canada—clearly show that, in addition to enjoying a substantial cost advantage, pipelines result in fewer fatalities, injuries, and environmental damage than road and rail. Americans are more likely to get struck by lightning than to be killed in a pipeline accident.**

<http://tinyurl.com/mqnjfpu>

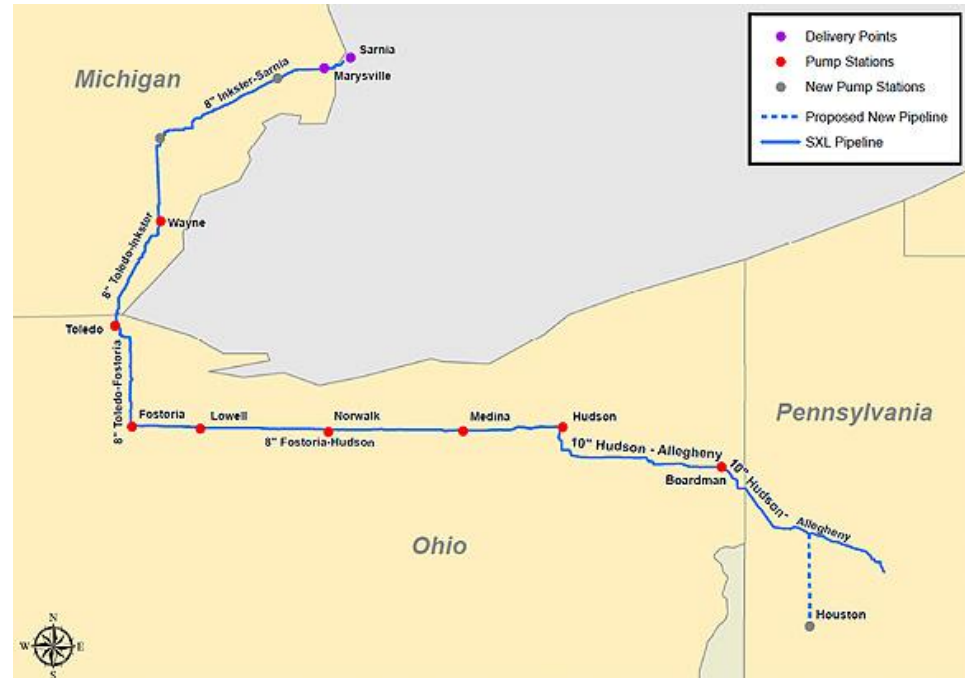
**PIPELINES ARE SAFEST FOR TRANSPORTATION  
OF OIL AND GAS**

# Mariner West & Allegheny Access Pipeline Projects



# Mariner West

- ❑ *Pipeline project to deliver ethane from the liquid-rich Marcellus Shale processing and fractionation areas in Western Pennsylvania to the Sarnia, Ontario petrochemical market.*
- ❑ Anticipated to have an initial capacity to transport up to 50,000 barrels of ethane per day.
- ❑ Operational as of Dec 2013





# Allegheny Access

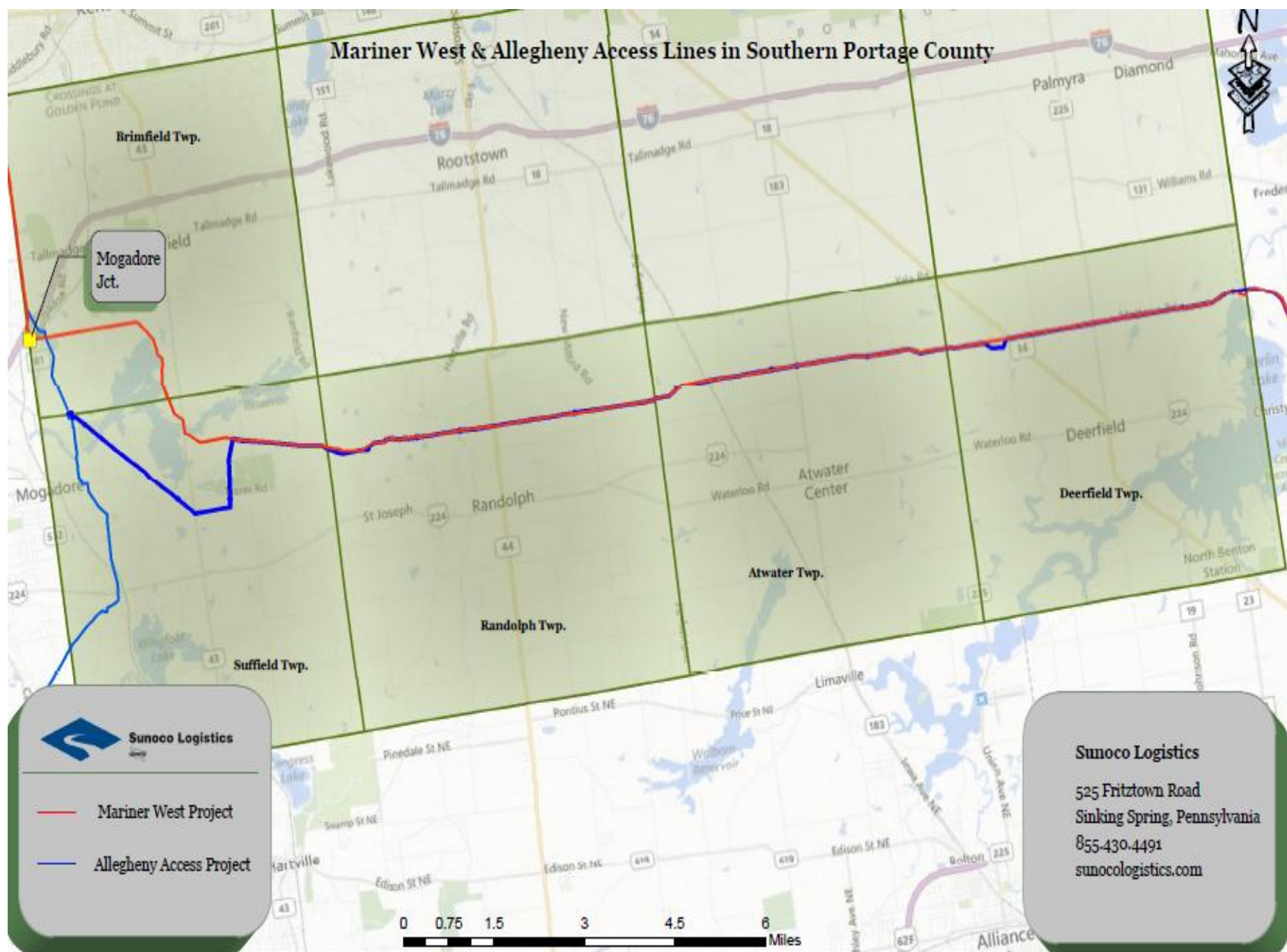
- ❑ *Pipeline project to deliver refined products from the Midwest to Eastern Ohio and Western Pennsylvania.*
- ❑ Utilizing existing and new assets, the Allegheny Access project will have an initial capacity to transport up to 85,000 barrels of refined products per day.
- ❑ *Allegheny Access is scheduled to be operational by the first half of 2014.*



**Sunoco Logistics**

Sunoco Pipeline L.P.

## Mariner West & Allegheny Access Lines in Southern Portage County





# Desktop Review

	Permit/Approval	Submission Date	Approval Date
Mogadore to Vanport	Buffalo District Nationwide Permit 12	2/25/2013	10/29/2013
	Pittsburg District Nationwide Permit 12	2/25/2013	12/16/2013
	PA DEP Joint Permit Application	3/4/2013	12/18/2013
	OEPA 401 Water Quality Certification	2/27/2013	12/20/2013
	OEPA Isolated Wetlands Permit	6/13/2013	12/20/2013
	USFWS Indiana Bat Management Plan	2/1/2013	3/19/2013

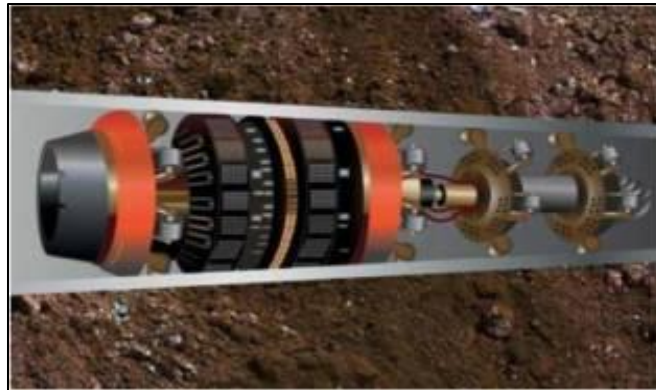
# Pipeline Operations

- MW/ AA Pipelines are Constantly monitored/controlled by Pipeline Control Center in Reading, Pennsylvania  
Operates 24/7/365 at **1-800-786-7440**



# Pipeline Maintenance

- Pipeline coated and uses cathodic protection (induced electrical current) to prevent corrosion
- Inline Inspection (Smart-pig)
  - Inserted into the pipeline to detect scrapes, nicks, dents, gouges, corrosion
  - Run every ~ five years



# How Will You Know Where a Pipeline is Located?

## □ Pipeline Marker

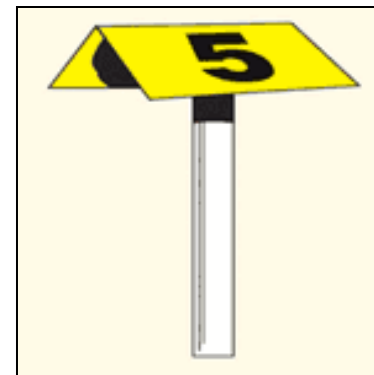
- Most commonly seen
- Contains Sunoco Pipeline/Inland Pipeline information, type of product, and our emergency contact number
- Size, shape and color may vary



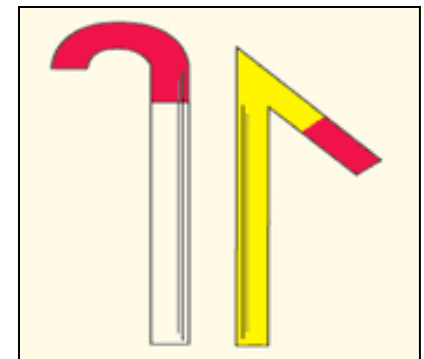
Pipeline markers

## □ Aerial Marker

- Skyward facing markers are used by patrol planes that monitor pipeline routes



Aerial marker



Casing Vent markers

## □ Casing Vent Marker

- Indicates that a pipeline (protected by a steel outer casing) passes beneath a nearby roadway, rail line or other crossing

# How Will You Know Where a Pipeline is Located?



Report damaged markers to Sunoco at 1-800-786-7440 (24/7/365)





---

# **Thank you for the opportunity to discuss pipelines!**

**Community Relations Hotline**

**855-430-4491**



**Sunoco Logistics**



Sunoco Pipeline L.P.