

COMMUNITY CONNECTIONS

Providing children, adults, and families an effective support system to assist in obtaining self-sufficiency and a safe, stable, healthy living environment



Presents for Kids

Christmas can be a difficult time for children in foster care who often reflect on family traditions and yearn to be with their biological families. For this holiday season, Portage County Job & Family Services (PCJFS) in conjunction with students and faculty of the Kent State Business Administration division sought the community's help in creating a memorable and magical Christmas for the 200 children in foster care placements this season.

PCJFS got a little more creative than previous years during this holiday season due to the safety requirements associated with the pandemic. On Saturday, December 5th the agency hosted a Holiday Toy Drive Thru and received an abundance of gifts and monetary donations from the Portage County community. As a result of the generosity from the community, the entire second floor of the Administration building is overflowing with Christmas presents. The kids in care will have a remarkable Christmas morning because of this amazing community.

A sincere heartfelt thank you goes out to all of the individual donors in Portage County, staff, and family members of Portage County Job & Family Services. Additional recognition and thanks goes out to the following community partner agencies: Wayland Community Church, the Fountain Church of God, New Life Church of Aurora, Delta Kappa Gamma, General Aluminum, Huntington Bank of Kent, Huntington Bank of Ravenna, Streetsboro Fire Department, City of Kent Fire Station, Deerfield Fire Department, Windham Fire Department, Portage County Veteran Services, Paramount Healthcare, Lilly Lawn & Landscape LLC., and Neighborhood Development Services.



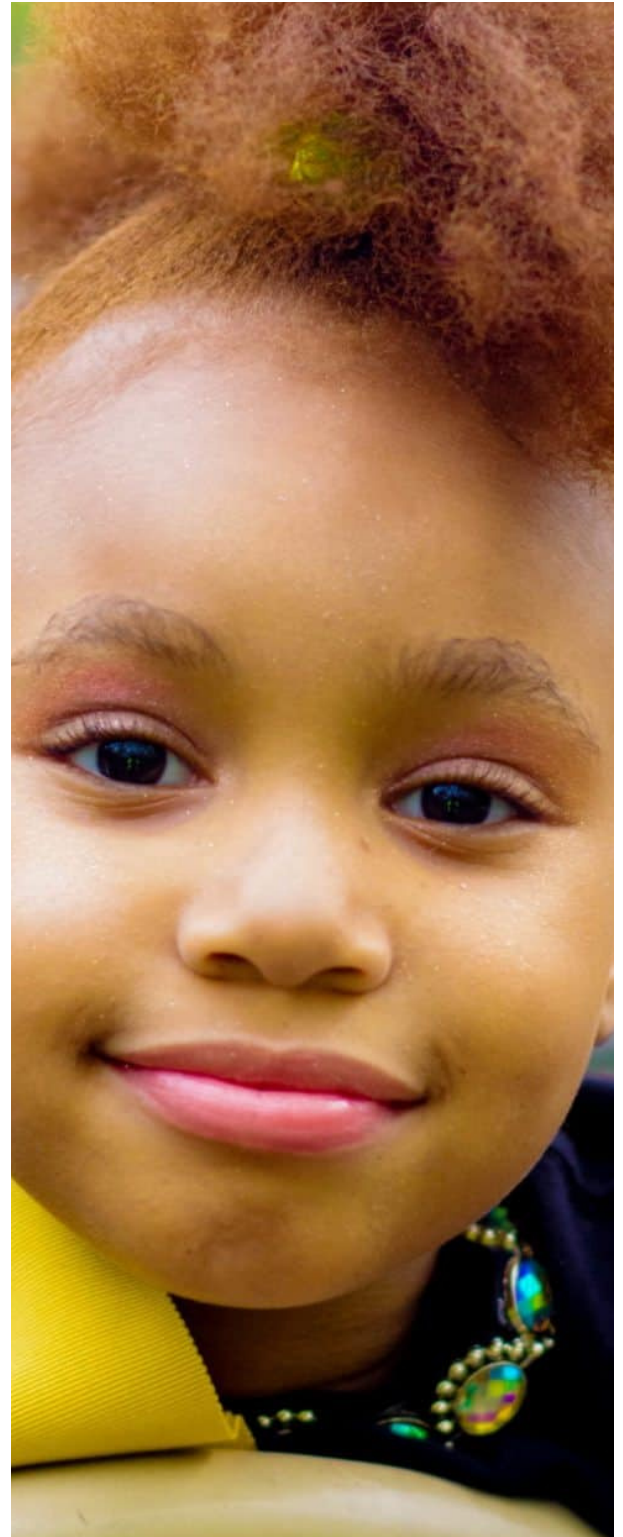
Adoption Awareness Month

CHILD AND ADULT PROTECTIVE SERVICES

November was Adoption Awareness Month. Not only do we celebrate the child, we also celebrate the families who finalized adoptions throughout the year. As 2020 comes to a close, Portage County can proudly state that six children age ranges from 3 to 17 have connected with their forever families.

Nine children in the custody of Portage County Job & Family Services still await a forever home. These children range in age from 11 to 17 and dream of living in a stable and healthy home environment. If you have interest in learning more about adopting a child, please consider reaching out to our team of professionals at (330)297-3809.

We want to thank our current adoptive families for the love and support they provide the children of Portage County each and every day. We recognize that 2020 has not been easy and we appreciate your devotion to the children in our community. We also look forward to expanding our list of adoptive families in the upcoming year and are excited to continue our mission of providing a safe, stable living environment for the Portage County children.



Child Support Payment Update

Child Support

Venmo is an application obligors can make a child support payment online. To make an online payment, please visit <https://oh.smartchildsupport.com>. The payment can be paid with Visa, Mastercard, Discover, American Express, UnionPay, Diners Club International, JCB and other E-wallet options besides Venmo including PayPal, Alipay, Apple Pay, and Google Pay. (Please allow three business days for the payment to be received by CSPC). Online payments can also be made via bank debit from checking or savings: The first payment may take up to 7 business days for this method, however, subsequent payments will be received by CSPC within 24-48 hours.

Obligors still have the option to make a payment by mail or to make a payment over the phone. To make a payment by mail you can send check or money order to the Ohio Child Support Payment central (CSPC) PO Box 182372, Columbus, OH 43218-2372. Be sure to include identifying information such as your name, SETS number, court order number, and your Social Security Number (optional).

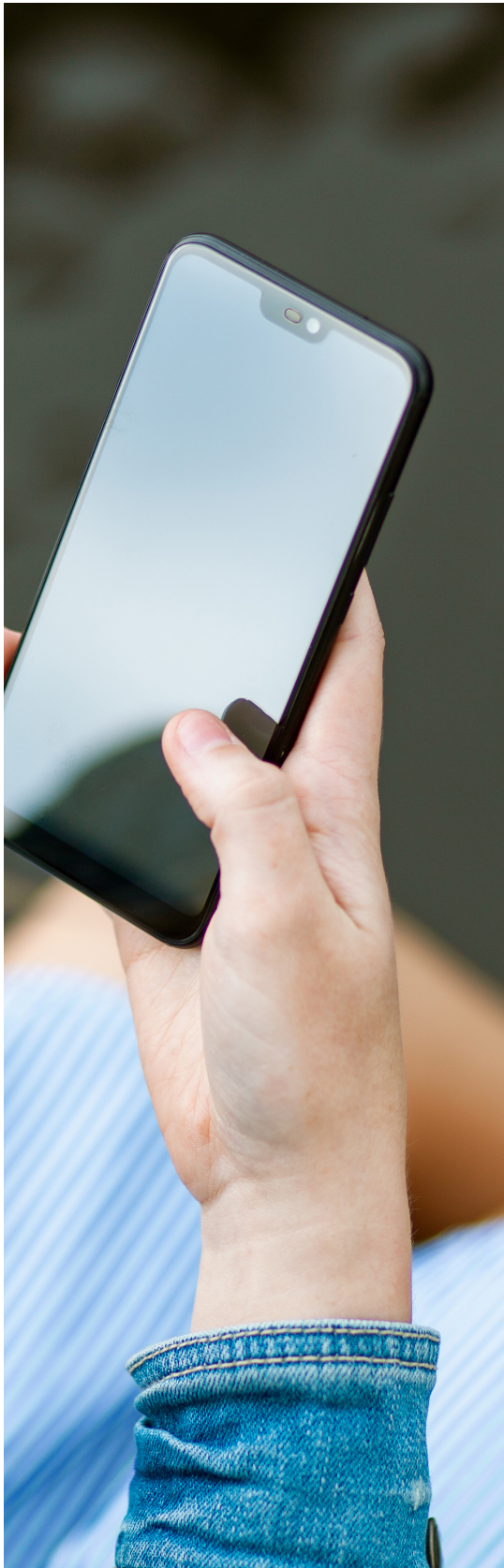
To make a free credit card payment via the phone, 24 hours a day, please call CSPC at 888-965-2676 and select option 5. Please allow three business days for the payment to be received by CSPC.

Additionally, as of December 1, 2020, obligors can schedule reoccurring payments through the payment website (<https://oh.smartchildsupport.com>). Once an account is created, the user can schedule the desired amount and frequency of payments in order to help clients make timely support payments. Please note that Portage County Child Support Division is not able to schedule the payment for the client, the client must create a secure profile and proceed through the website. For any questions, please call Portage County Job & Family Services at (330)297-3750.



The Ohio Child Support Application

Child Support



Clients are now able to download the Ohio Child Support app on Apple or Android devices by searching "Ohio Child Support" in the App store or Google Play Store. The application's interface will resemble that of the web based portal. The new app provides users with a secure and easy way to access their child support case information while on the go.

In order to use the app, the client must be registered for the web portal. If the client is new, they will have to register as a new user before gaining access to their information in the app. To register, the user will need their Ohio Drivers License in which the Ohio BMV will validate the identity of the client. If the user does not have an Ohio Drivers License, the identity can be verified via information specified to their child support case.



Users of the app can do the following:

- Register to access child support case and order information
- Make a payment by credit or debit card or connect to the State Disbursement Unit where you can make a payment via checking or savings account debit
- Receive payments by adding or updating electronic disbursement via either a bank account or a debit card
- Review your payment history containing 24 months of account transaction information
- Receive payment notifications and alerts- Receive a notification when payments have posted to your case and be alerted when needed information is missing in your case file.
- View case/order details for all of your Ohio child support cases
- View and update your personal information including your contact, employment, health insurance and child information
- Contact your child support worker by safely and securely sending messages and/or attachments through the application
- Search Local Child Support Agency for contact information including phone numbers, addresses, websites and directions

Manufacturing Internship Program

OHIO MEANS JOBS PORTAGE COUNTY



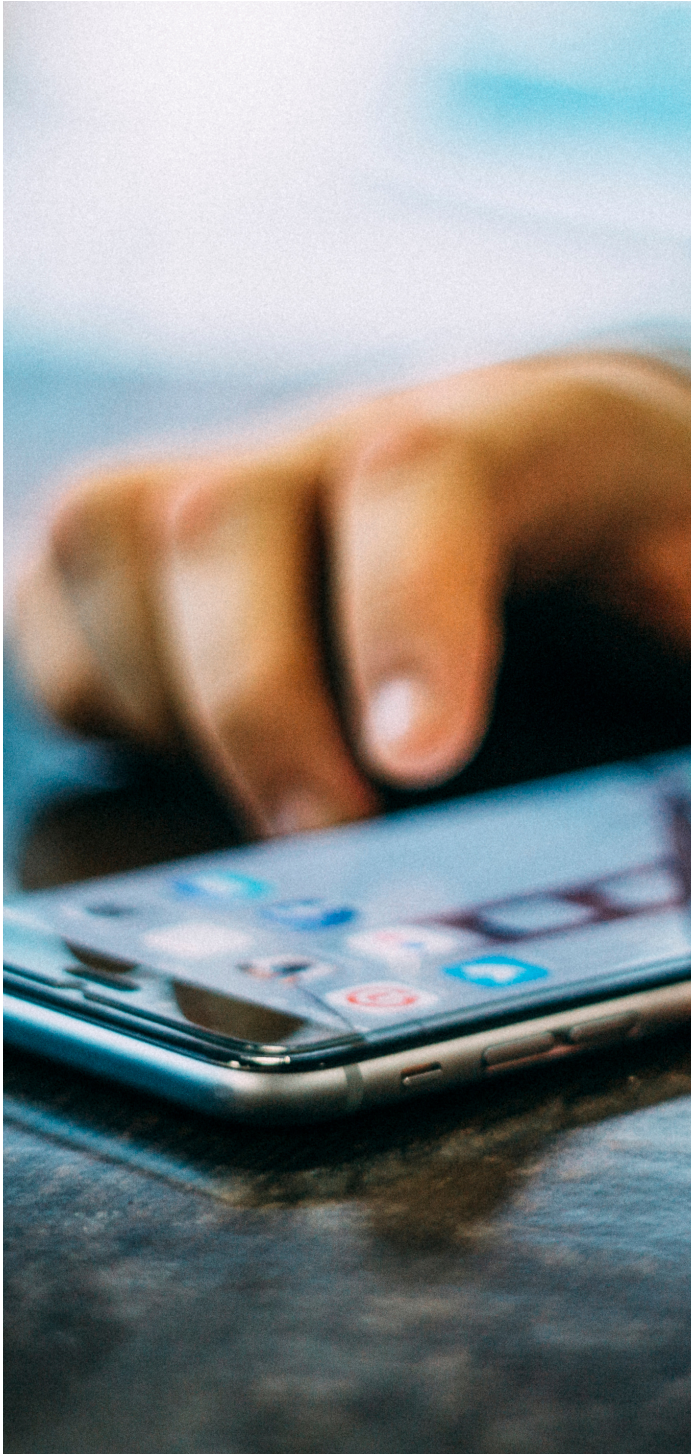
Portage County Job & Family Services is pleased to highlight the fourth graduating class of the collaborative Manufacturing Internship Program through the OhioMeansJobs Portage County division. In late August, the fall cohort began training for their Manufacturing Readiness certificate from Kent State University. This program was free to Portage County participants but to be eligible individuals had to have interest in pursuing careers in manufacturing, complete a background check and pass a drug screening. The course combines classroom learning with hands on training at a local manufacturing company to provide the best learning experience for the participants. At the end of the course, seven participants were awarded their certificate and have now moved into a full time work/internship experience.

After the internship, the company in which the participant has been interning with has the option to hire participants as full time employees. OhioMeansJobs Portage County would like to thank all of the internship partners: Kent State University Tuscarawas, Natural Essentials, Mantaline, Cleveland Steel and Paris Linen Company.

The OhioMeansJobs Portage County team is very proud of their graduates and wishes them the best in their future endeavors! The next internship class is slated to begin in spring of 2021. If you or someone you know may be interested in the program, please call the OhioMeansJobs Portage County Center for more information at (330)296-2841 or stop by the OhioMeansJobs Center at 253 S. Chestnut Street, Ravenna, OH 44266 from 9:00AM-11:00AM or 1:00PM-3:00PM, Monday through Friday.

Public Assistance Reminders

PUBLIC ASSISTANCE



Portage County Job & Family Service's Public Assistance Division is committed to providing essential services such as Food Assistance aka SNAP, cash assistance, child care subsidy, Medicaid, Prevention, Retention and Contingency (PRC) emergency assistance, and Non-Emergency Transportation (NET) to the residents of Portage County.

At this time, residents can access these services in a variety of ways. The easiest way is by calling our shared services phone number. The number to call is 1-844-640-OHIO (6446). Through this phone call, residents are able to apply for SNAP (Food Assistance), TANF (Cash Assistance), and/or Medicaid benefits. Customers can also renew their benefits for these programs, as well as report any changes. Residents can also apply online for SNAP, TANF, or Medicaid benefits at benefits.ohio.gov. The phone line is open Monday – Friday from 8:00 a.m.- 4:00 p.m. If residents are calling in regards to long term care or child care service needs, they are asked to call (330)297-3750 where there are options to speak to representatives from each of those areas. Additionally, residents in need of NET services can contact (330)297-3785. Portage County Job & Family Services is committed to meeting the needs of the Portage County community.

**Shared Services Phone Line: 1(844)640-OHIO (6446)
Monday through Friday 8AM-4PM**

Non-Emergency Transportation (NET): (330)297-3785

Apply online! [Benefits.Ohio.gov](https://benefits.ohio.gov)

**Portage County Job & Family Services Main Line:
(330)297-3750**



Job & Family Services

**449 S. MERIDIAN STREET
RAVENNA, OH 44266**

DIRECTOR:

KELLIJO JEFFRIES, PHD, MSW, LSW
KELLIJO.JEFFRIES@JFS.OHIO.GOV
(330)297-2226

PORTAGE COUNTY BOARD OF COMMISSIONERS:

KATHLEEN CLYDE
VICKI A. KLINE
SABRINA CHRISTIAN-BENNETT

THE COMMUNITY CONNECTION IS A PUBLICATION OF PORTAGE COUNTY JOB & FAMILY
SERVICES. IF YOU HAVE ANY QUESTIONS OR CONCERNS PLEASE
CONTACT PUBLIC INFORMATION OFFICER
KIM MCCLENDON AT (330)357-7190 OR KIM.MCCLENDON@JFS.OHIO.GOV

*DON'T FORGET TO CHECK US OUT ON SOCIAL MEDIA!
LIKE US ON FACEBOOK! WWW.FACEBOOK.COM/PCJFS
FOLLOW US ON TWITTER! @PCJFS*