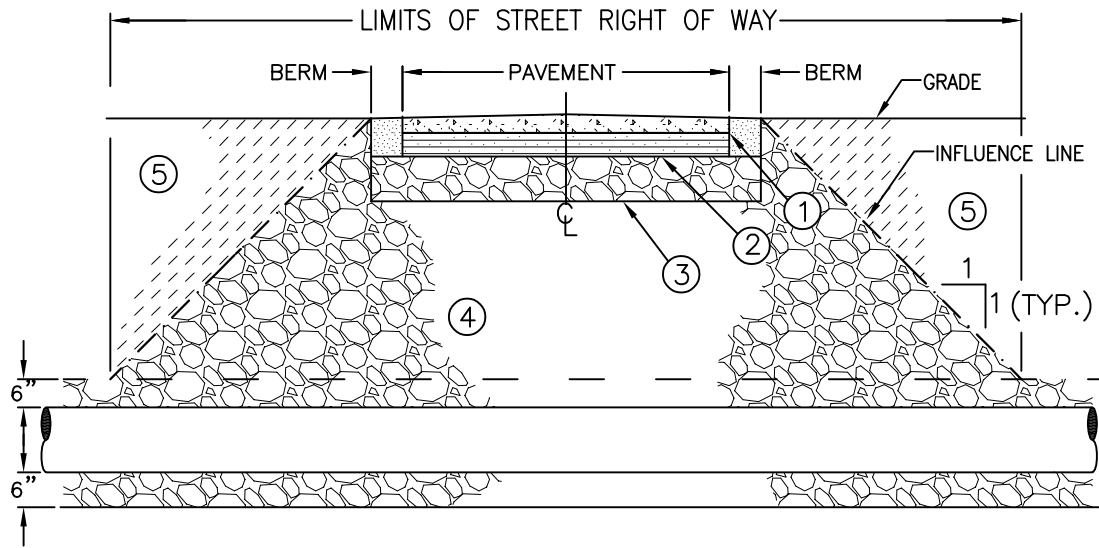


NOTES:

1. REFER TO OSHA REQUIREMENTS FOR TRENCH EXCAVATION SAFETY.
2. PROVIDE FILTER FABRIC WHEN VERY FINE OR UNSTABLE MATERIAL IS ENCOUNTERED
3. REFERENCES TO ODOT SHALL MEAN OHIO DEPARTMENT OF TRANSPORTATION CONSTRUCTION AND MATERIAL SPECIFICATIONS, LATEST EDITION.



CONCRETE

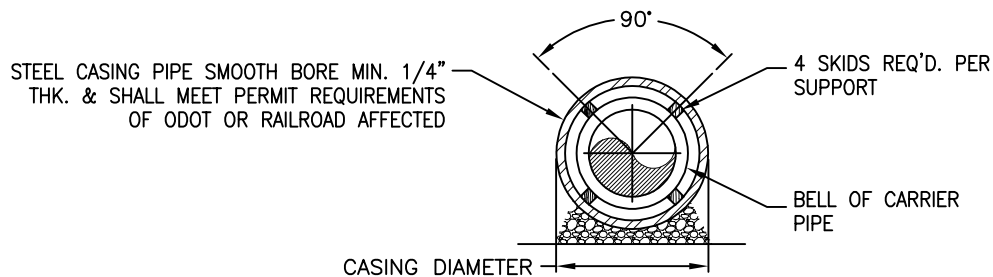
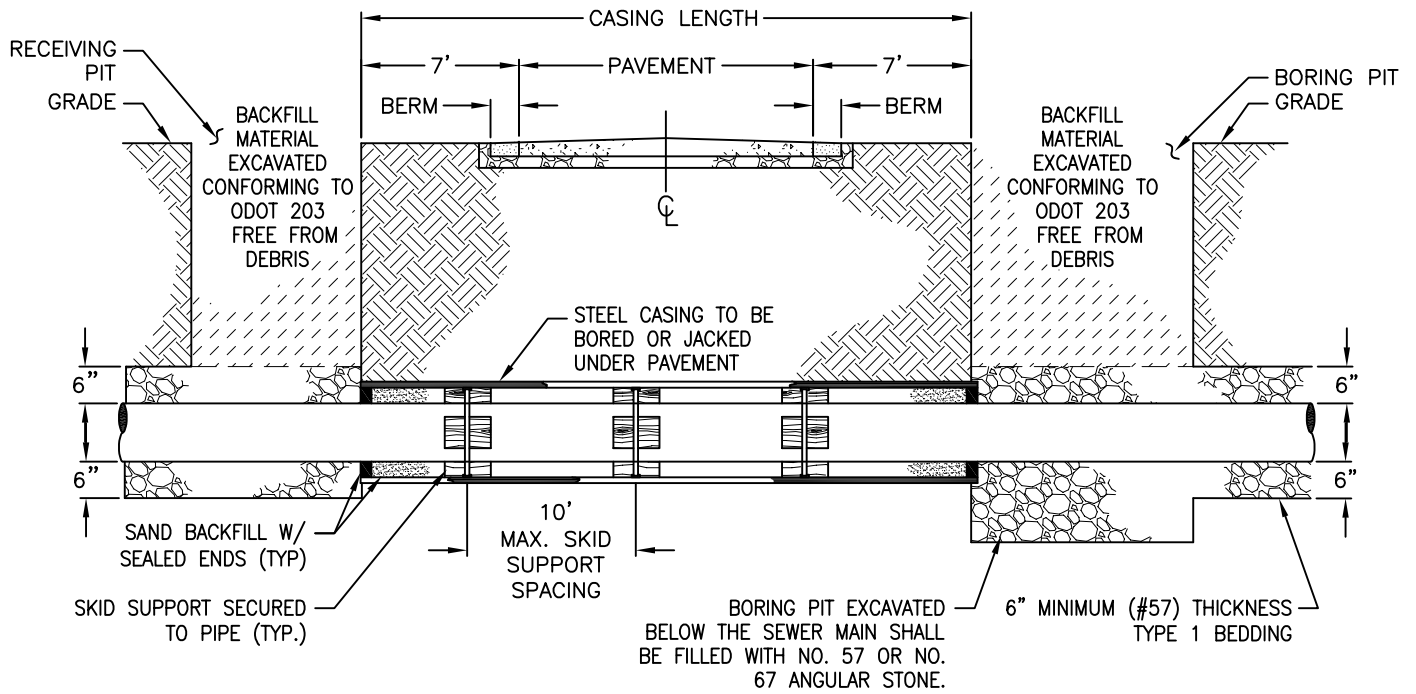
- ① ODOT ITEM 452 NONREINFORCED OR ODOT ITEM 451 REINFORCED CONCRETE PAVEMENT (8" THICK)

ASPHALT

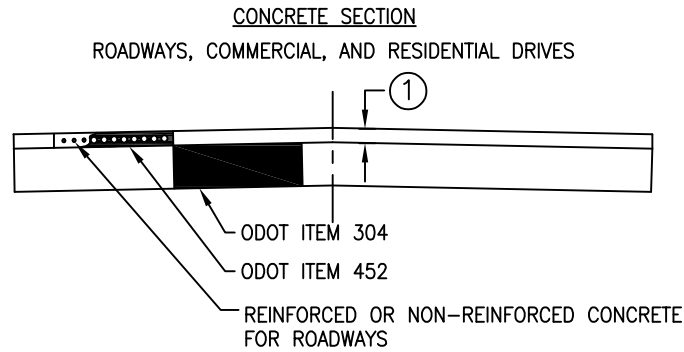
- ① ODOT ITEM 448 - ASPHALT CONCRETE (1-1/2" THICK)
PAVEMENT SURFACE COURSE
- ② ODOT ITEM 301 - (8" THICK)
PAVEMENT BASE COURSE
- ③ ALL PAVEMENT TRENCH SECTIONS REQUIRE ODOT 304 CRUSHED AGGREGATE
- ④ BACKFILL, ODOT 304 LIMESTONE REQUIRED UNDER PAVEMENTS, DRIVEWAYS, ETC. IN LAYERS NOT EXCEEDING 8" LOOSE DEPTH AND COMPACTED BY MECHANICAL DEVICES TO NOT LESS THAN 98% OF STANDARD DENSITY.
- ⑤ BACKFILL OUTSIDE INFLUENCE LINE, CONFORMING TO ODOT 203, EXCAVATED EARTH FREE FROM DEBRIS, COMPACTED TO AT LEAST DENSITY OF SURROUNDING GROUND.

NOTES:

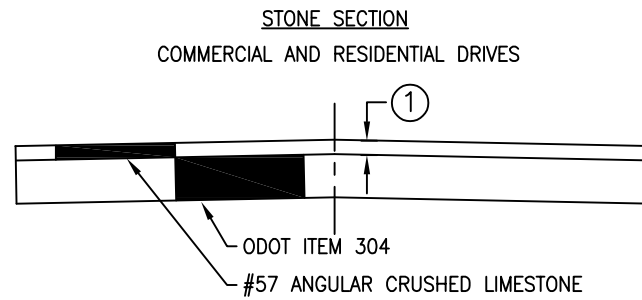
1. PAVEMENT REPAIR AND BACKFILL REQUIREMENTS SUBJECT TO ROADWAY JURISDICTIONAL REQUIREMENTS.



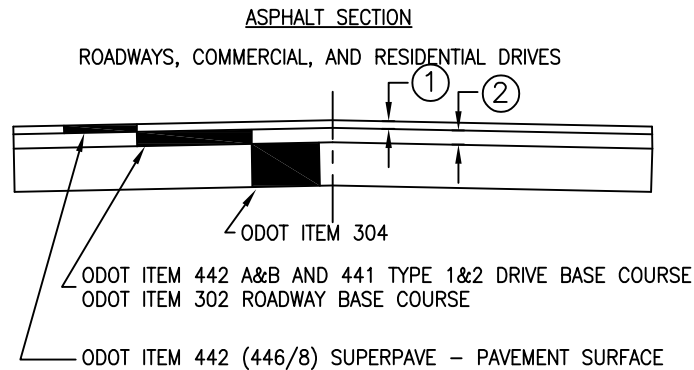
END VIEW



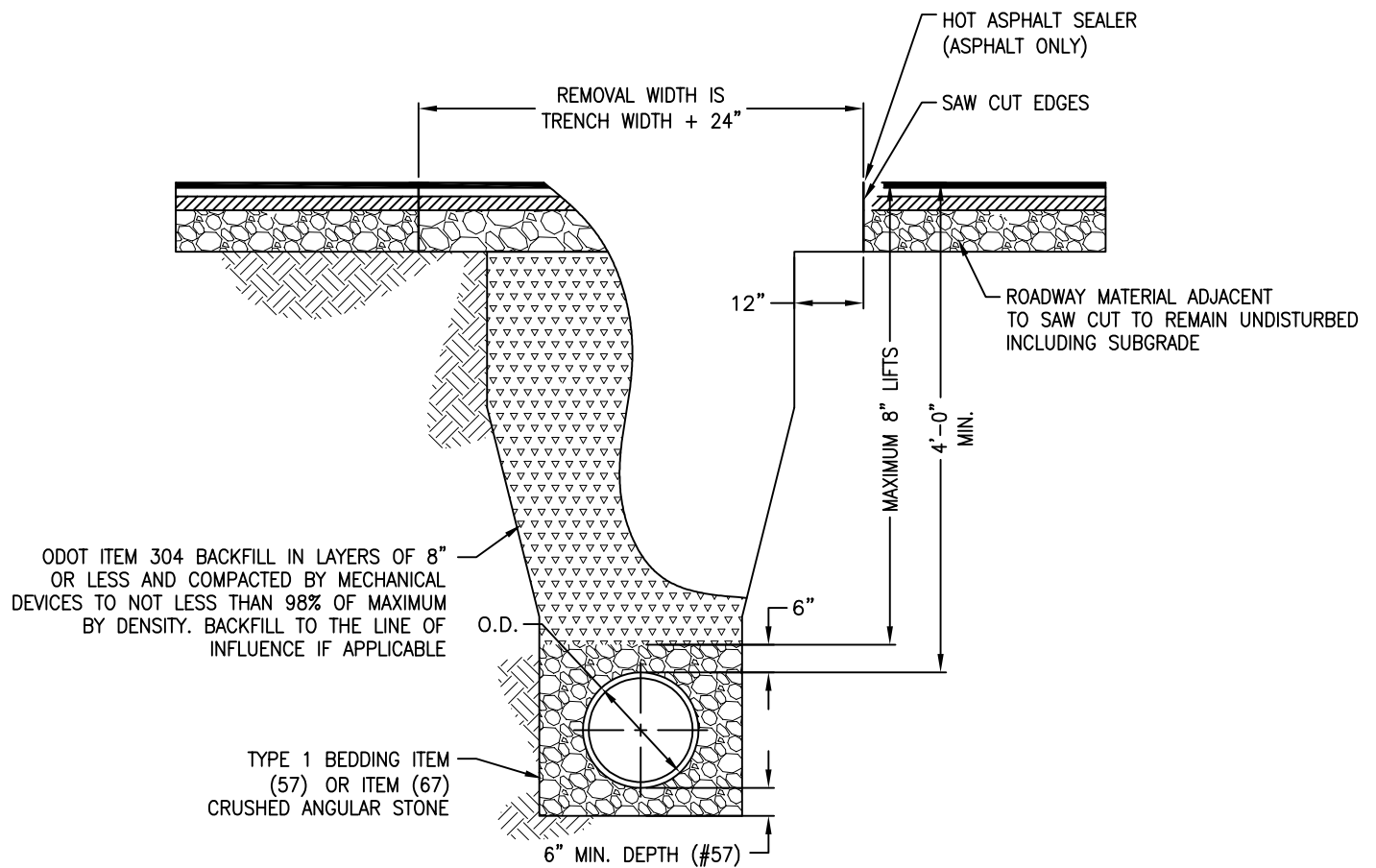
- ① ROADWAY AND COMMERCIAL DRIVES – 8" THICK CONCRETE
RESIDENTIAL DRIVE – 6" THICK CONCRETE



- ① COMMERCIAL DRIVES – 8" THICK CRUSHED LIMESTONE
RESIDENTIAL DRIVE – 6" THICK CRUSHED LIMESTONE

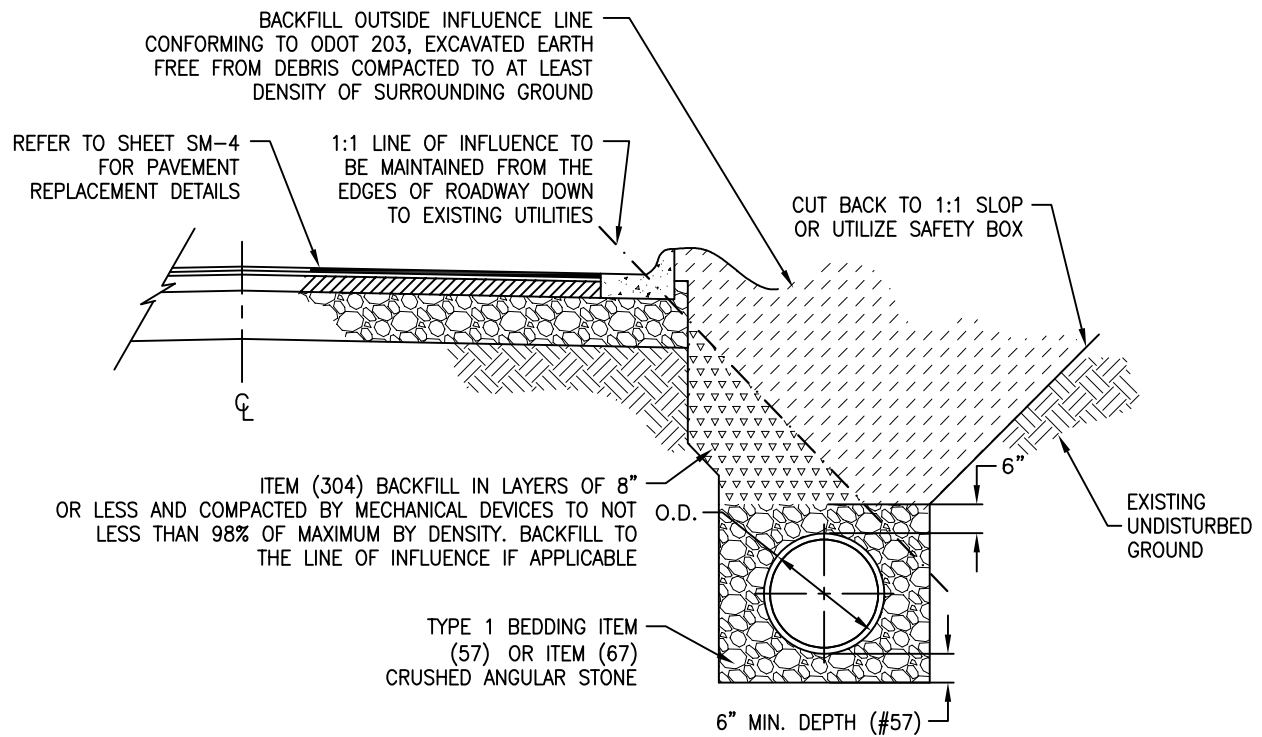


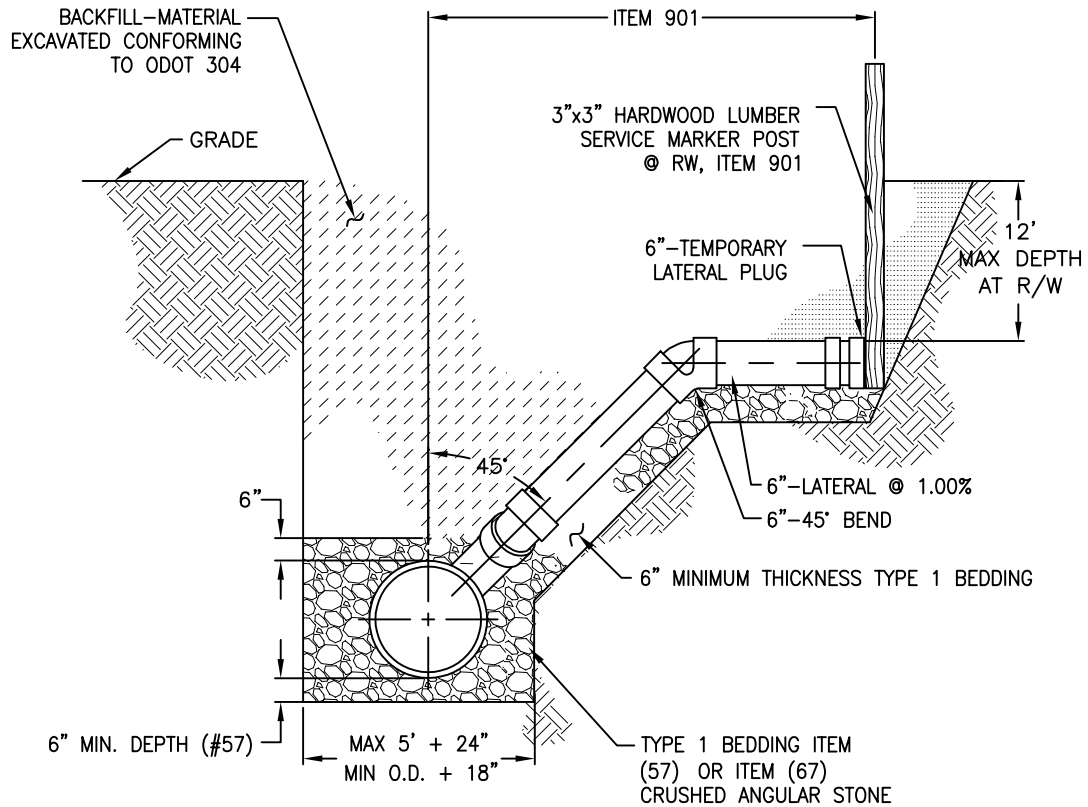
- ① COMMERCIAL & RESIDENTIAL DRIVES – 2-½" THICK SURFACE COURSE
ROADWAY – 1-½" THICK SURFACE COURSE
- ② RESIDENTIAL DRIVE – 3-½" THICK PAVEMENT BASE COURSE, COMMERCIAL DRIVE – 5-½" THICK PAVEMENT BASE COURSE, ROADWAY – 8" THICK PAVEMENT BASE COURSE



NOTES:

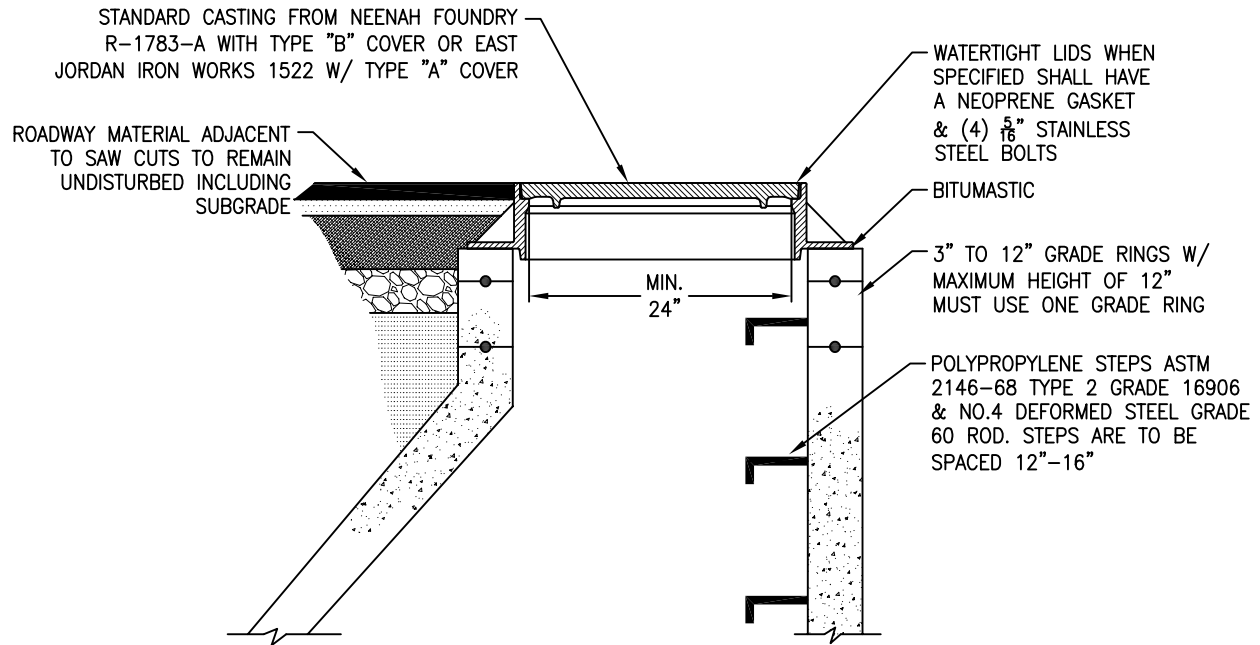
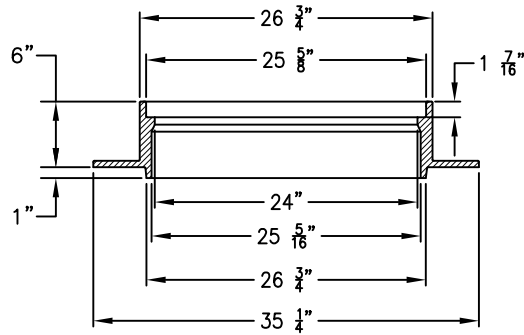
1. NEWLY INSTALLED ROADWAY NEEDS TO MEET EXISTING ROADWAY OR FALL WITHIN TABLE MINIMUM OR CITY REQUIREMENTS. REFER TO SHEET SM-4 FOR ROADWAY DETAILS





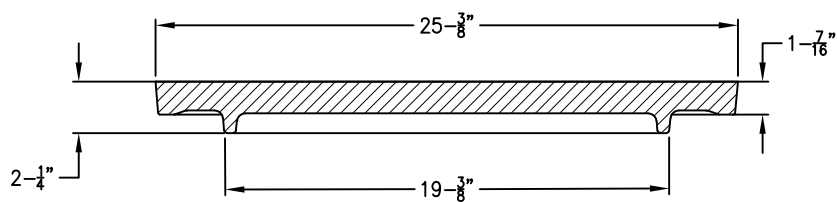
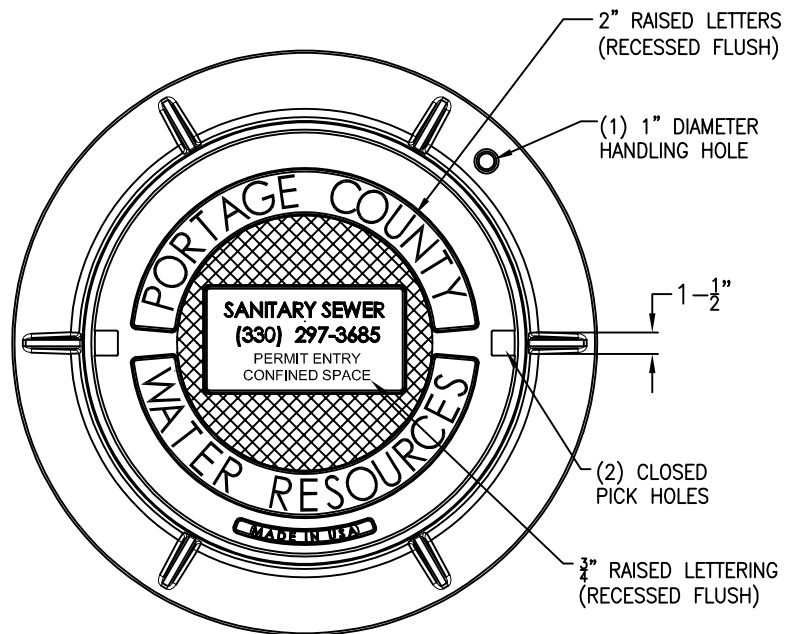
NOTES:

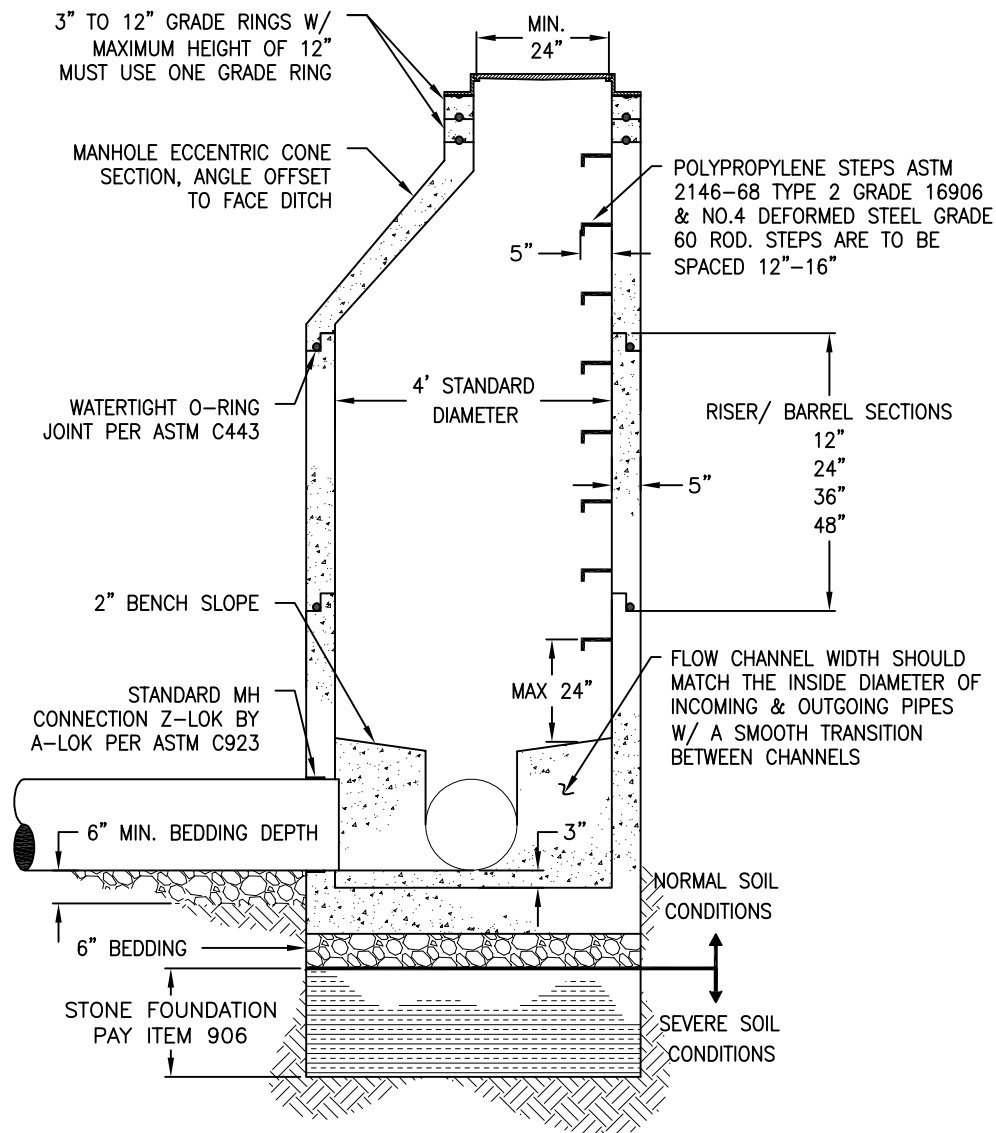
1. END OF LATERAL SHALL BE MARKED WITH 3"x3" HARDWOOD LUMBER, SHALL HAVE A 12' MAX DEPTH AND SHALL BE EXTENDED PAST THE R/W AS NEEDED TO NOT EXCEED THE 12' MAX DEPTH.
2. LIVE TAP SADDLE TO BE APPROVED BY PCWR.



NOTES:

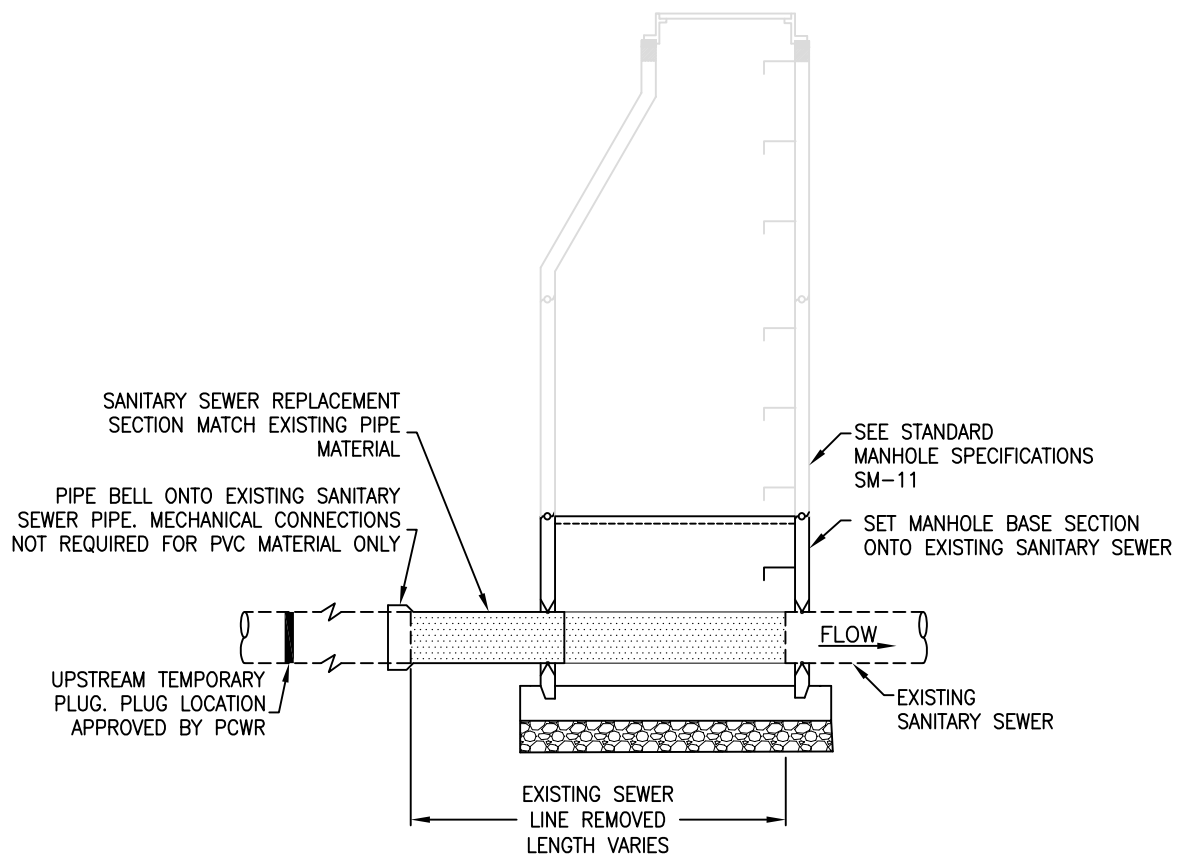
1. REFER TO SM-4 FOR SPECIFICATION ON PARTICULAR ROADWAY TYPE.
2. ALL RISERS, CONES, GRADE RINGS AND FLAT SLABS PER ASTM C478~CONCRETE TYPE II, CONFORMING TO ITEM 604, SECTION 706.13 UNLESS OTHERWISE SPECIFIED.





NOTES:

1. MANHOLE SHALL BE AIR TESTED IN ACCORDANCE WITH ASTM C1244
2. THE 12" STONE FOUNDATION IS AS DIRECTED BY FIELD ENGINEER AND INCLUDED WITH 906 BID PRICE.
3. ALL RISERS, CONES, GRADE RINGS AND FLAT SLABS PER ASTM C478~CONCRETE TYPE II, CONFORMING TO ITEM 604, SECTION 706.13 UNLESS OTHERWISE SPECIFIED



NOTES:

1. DUCTILE IRON & VITRIFIED CLAY REQUIRE SHEAR BAND CONNECTOR
2. SEWER PLUG OR SEWER BYPASS PLAN REQUIRES PCWR APPROVAL

PIPE SPECIFICATIONS:MATERIALJOINTBEDDINGSANITARY SEWER:

PVC: (SDR-35) 4"Ø TO 15"Ø (LESS THAN 12' DEEP)
PVC: (SDR-26) 4"Ø TO 15"Ø (12' OR GREATER)
PVC: 18"Ø - 30"Ø
DIP: 18"Ø - 30"Ø (12' OF GREATER) P.S.115
DIP: DR-9
RCP 15"Ø ON UP

ASTM D3034
ASTM D3034
ASTM F679
ANSI/AWWA C151/A21.51
ASTM 1248/ASTM D3350-84
ASTM C76

ASTM D3212
ASTM D3212
ASTM D3212
ANSI/AWWA C111/A21.11
BUTT FUSION
ASTM C361

ASTM D2321
ASTM D2321
ASTM D2321
ASTM C12
ASTM D2321

FORCE MAIN:

PVC SDR-26 (MIN.); 4" Ø AND LESS
PVC SDR-21 (MIN.); 6" Ø AND GREATER
PVC C-900
DIP

ASTM D2241
ASTM D2241
AWWA C-900
ANSI/AWWA C151/A21.51

ASTM D3139
ASTM D3139
ASTM D3139
ANSI/AWWA C111/A21.11

ASTM D2321
ASTM D2321
ASTM D2321
ASTM C12

TRACE WIRE FOR NONMETALLIC PIPE REQUIRED



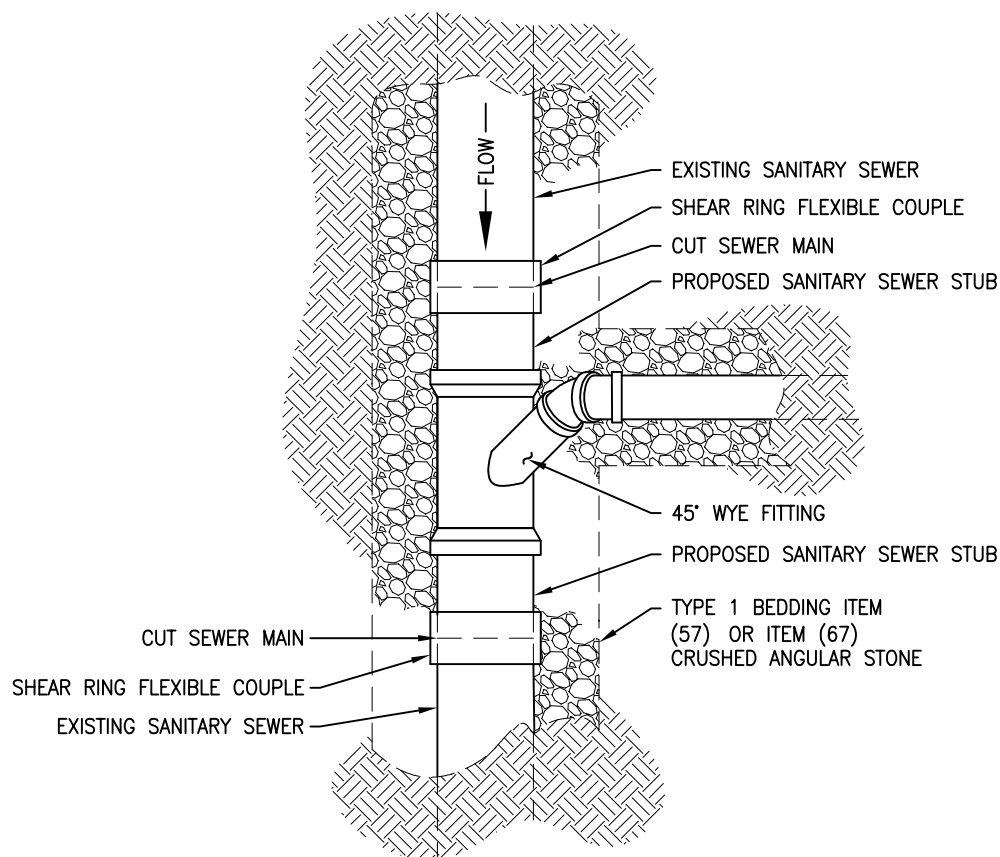
PORTAGE COUNTY WATER RESOURCES

PIPE SPECIFICAITONS

04-01-2023

APPROVED DATE

SM-13



NOTES:

1. CONTRACTOR SHALL PREPARE A FLOW CONTROL PLAN BEFORE CUTTING INTO THE ACTIVE SEWER, SUBMIT TO PORTAGE COUNTY WATER RESOURCES FOR APPROVAL.
2. THE FLEXIBLE COUPLE SHALL HAVE GASKET WITHIN STAINLESS STEEL CLAMP & SHEAR RING MANUFACTURED FOR FLEXIBLE TRANSITION FOR UNDERGROUND PIPING.
3. THE LATERAL CONNECTION SHALL USE A PVC SDR WYE GASKETED FITTING WITH PVC SDR PIPE STUBS USING SDR 35 OR SDR 26 WHEN THE DEPTHS ARE GREATER THAN 12 FEET.
4. WHEN THE FLOW CONTROL OR THE SIZE OF THE EXISTING CUT IN SEWER IS A LIMITING CONDITION, A CAST IRON BODY WITH INTEGRAL PIPE STOP SEWER SADDLE MAY BE USED AS APPROVED BY PORTAGE COUNTY WATER RESOURCES, REQUIRED 3-1/2" STRAP WIDTH, STAINLESS STEEL MATERIALS AND HARDWARE WITH STYRENE BUTADIENE RUBBER GASKET.